

Municipality of the District of Chester

WASTE COLLECTION CALENDAR



2021

INDEX

Bag limits	pg 21
Bag sizes.....	pg 6
Broken glass.....	pg 29
Bulky items	pg 12
Clear bag information.....	pg 6, 10
Collection map/routes	pg 16 - 18
Composting/recycling	pg 8, 10
COVID-19 information	pg 5, 24
FAQs.....	pg 21
Hours of operation	pg 4, 32
Household Hazardous Waste.....	pg 28
Illegal dumping.....	pg 15, 26
Kaizer Meadow.....	pg 4, 5, 19, 32
Paper bags for compost.....	pg 8
Plastic Bag Ban.....	pg 14
R6RECYCLES App.....	pg 14, 30
Sorting guide.....	pg 10
Winter waste collection.....	pg 7, 9

Special Leaf Collection will take place between November 15 & 26

Please see page 27 for details.



Special leaf collection takes place this week



Waste collection cancelled



Alternate collection day

LOOK FOR THESE SYMBOLS THROUGHOUT THE CALENDAR!

Message from the Warden

This February marks 25 years of legislated recycling and solid waste management in Nova Scotia. Since that time, Nova Scotians have consistently been a leader in sorting, diverting and repurposing municipal solid waste. Municipal Council and I especially applaud our residents and Solid Waste Services team for their commitment to responsible solid waste management. Most recent data shows that the Municipality of Chester residents dispose of approximately 317 kg per person per year while the provincial number is 400. Your diligence is the reason why we can celebrate this success. Well done!

Members of Council
(left to right, back to front)

- District 3 - Councillor Danielle Barkhouse;
- District 2 - Councillor Floyd Shatford;
- District 1 - Councillor Andre Veinotte;
- District 6 - Councillor Tina Connors;
- District 4 - Warden Allen Webber;
- District 7 - Councillor Sharon Church;
- District 5 - Councillor Abdella Assaff

Municipality of the District of
Chester, P O Box 369, Chester NS
B0J 1J0

Phone: 902-275-3554
Fax: 902-275-4771



December 2020

Questions? Call 902-275-2330

IMPORTANT INFORMATION REGARDING CHRISTMAS DAY, BOXING DAY & NEW YEAR'S DAY (2021) WASTE COLLECTION

This year, if your collection day falls on **CHRISTMAS DAY** (Dec. 25), please place your waste out for collection on **SATURDAY, DECEMBER 26.**

If your collection falls on **NEW YEAR'S DAY 2021** (Friday Week A), please place your waste out for collection on **SATURDAY, JANUARY 2, 2021.**

PLEASE CHECK THE CALENDAR AND LOOK FOR THE ICONS TO SEE WHEN YOUR COLLECTION DAY WILL BE.



Sun	Mon	Tue	Wed	Thu	Fri	Sat
WEEK A		1	2	3	4	5
HAVE WASTE CURBSIDE FOR 7 A.M.						
6	7	8	9	10	11	12
WEEK B						
13	14	15	16	17	18	19
WEEK A						
20	21	22	23	24	25	26
WEEK B					CHRISTMAS DAY NO COLLECTION SITE CLOSED	BOXING DAY ALTERNATE COLLECTION SITE CLOSED
27	28	29	30	31	During a storm, listen to CKBW or call 902-275-2330 or 902-275-1312 in case collection is cancelled. If cancelled, collection will be the Saturday following your regularly scheduled day.	
WEEK A						

✂️ SORTING WASTE OVER THE HOLIDAYS

RECYCLABLES	PAPER	ORGANICS	GARBAGE
Plastic packaging	Regular wrapping paper	Waxed paper	Foiled wrapping paper
Clear plastic wrap	Gift bags	Tissue paper	Bows & ribbon
Tin cookie/candy containers	Christmas cards & envelopes	Christmas cookies & candy	Christmas lights

TAKING DOWN THE CHRISTMAS TREE?

No problem! Place it out on your next waste collection day and it will be collected as your bulky item!



The Municipality of Chester would like to wish everyone a very happy holiday season!





Kaizer Meadow

Environmental Management Centre

Hours of Operation
 Monday - Saturday - 8 a.m. - 4 p.m.
 Sunday - Closed
 902-275-2330
 www.chester.ca

The Kaizer Meadow Environmental Management Centre is comprised of a waste management facility that actually improves the environment and an Eco-Park for green businesses. We are located at 450 Kaizer Meadow Road, Route 14, approximately 17 km North from Exit 8, Highway #103. Look for the sign!



Welcome to the Kaizer Meadow Wind Turbine Campsite! We now offer visitors the opportunity to rest, visit or stay overnight in this unique setting. The area can accommodate five or six tents, has a fire pit, washroom facilities and more!

A REMINDER ABOUT KAIZER MEADOW

Kaizer Meadow no longer accepts asbestos waste however, we can still help! Call us at 902-275-2330 for contact information for alternate disposal sites that will accept this material.



Kaizer Meadow originally opened in 1993. At that time, there were approximately 100 dumpsites in NS. Today, there are only seven Second Generation Landfills in NS.



Kaizer Meadow is also the home of a 98 metre tall, 2 MW wind turbine which produces enough electricity for approximately 500 homes. The cost? \$5.5 million!



Half cells are constructed at a cost of approximately \$3 million dollars each. Construction on Kaizer Meadow's landfill cell "4A" was completed in September 2017.



Questions? Call 902-275-2330 or email solidwaste@chester.ca

January 2021

www.chester.ca

IMPORTANT INFORMATION REGARDING KAIZER MEADOW

During the COVID-19 pandemic, a lot of things changed. One of those changes affected our procedure regarding loaning out Personal Protective Equipment (PPE) at the site.

In the past, we were able to loan PPE to residents and contractors who may have forgotten to bring theirs with them on a trip to Kaizer Meadow. Unfortunately, we are no longer permitted to loan out our safety equipment.

Residents and contractors will be required to have their own PPE (hard hat, steel toed boots, safety glasses, reflective vest) with them if they want to access the site beyond the Public Drop-Off area. If proper PPE is not available, site access will be **DENIED**.

PPE is **NOT** required when using the Public Drop-Off area.



Sun	Mon	Tue	Wed	Thu	Fri	Sat
WEEK A					1  NEW YEAR'S DAY NO COLLECTION SITE CLOSED	2  ALTERNATE COLLECTION
3 WEEK B	4	5	6	7	8	9
10 WEEK A	11	12	13	14	15	16
17 WEEK B	18	19	20	21	22	23
24 WEEK A 31 WEEK B	25	26	27	28	29	30

IMPORTANT INFORMATION REGARDING NEW YEAR'S DAY WASTE COLLECTION

This year, if your collection day falls on **NEW YEAR'S DAY** (January 1), please place your waste out for collection on **SATURDAY, JANUARY 2**.

PLEASE CHECK THE CALENDAR AND LOOK FOR THE ICONS TO SEE WHEN YOUR COLLECTION DAY WILL BE.



WASTE COLLECTION

A few tips and guidelines to remember about waste collection:

COLLECTION OF WASTE

ALL WASTE must be within 10 feet of the curb or it will not be collected.



ALWAYS place your waste at the end of your own driveway and **NOT** across the street.

IN 2020, SOME OF THE COLLECTION ROUTES CHANGED! Waste is collected every two weeks, on your scheduled collection day. On your collection day, garbage, blue bag recyclables, recyclable paper, green cart and **ONE** bulky item will be collected. To see if you were affected by the **NEW ROUTE CHANGES IN 2020**, see **PAGE 18** or call Kaizer Meadow to find out.



ALSO IN 2020, THE START TIME for waste collection changed. Please be sure to have your waste curbside for **7 A.M.** Breakdowns, weather, new drivers and route changes may affect when your waste is collected. Having your waste curbside by **7 A.M.** ensures you won't be missed. Trucks **WILL NOT** return to collect waste that was put out late.

DO NOT place your waste with your neighbour's waste unless both civic addresses are posted. If the waste collectors only see one civic number posted, they will only collect the allowable bag limit and will reject the rest.

BAGS, BAGS & MORE BAGS

INDUSTRIAL SIZED BAGS (larger than 31' x 42") **CANNOT** be collected at the curb. First, they are too heavy for one person to lift into the hopper of the truck, which is 3 feet from the ground. Second, these bags are too big to fit into the hopper of some of the collection trucks. Please do not use them.



ONLY ONE black bag will be collected per collection. Any more than that will be rejected.

WASTE THAT IS PLACED in garbage cans/containers **MUST BE** bagged. Loose waste will not be collected.

THE CLEAR BAGS FOR GARBAGE PROGRAM is not just for curbside collection. The **SAME** clear bag rules apply when delivering waste to Kaizer Meadow **AND** when bagging up waste for bulky item collection (see **PAGE 12** for details). Using clear bags encourages people to recycle and compost, and it also makes it safer for the people who handle your waste.

BLACK BAGS are subject to inspection. These bags are not meant to conceal unsorted waste. The bag is meant for any type of garbage, including "personal" garbage, that you do not want your neighbour to see.

THIS & THAT

IF YOU HAVE OR USE a waste collection box, be sure it's free of loose debris. The collector is not responsible for picking up loose waste. Also, if you share a box with other neighbours, remember that only **ONE** black bag is permitted per household. Civic numbers need to be posted so that the collector knows how many bags to collect.

February 2021

Questions? Call 902-275-2330

IS YOUR WASTE ACCESSIBLE DURING THE WINTER?

Do you have a collection box that you use for your waste? Do you know that it needs to be accessible in order for you to receive waste collection?

Please be sure that your box or collection area is clear of snow and snow banks so that your collection service isn't interrupted.

Waste will NOT be collected if your box looks like this...



WINTER COLLECTION ON PRIVATE ROADS

If you live on a private road, plow & salt/sand it **BEFORE** collection.

If your road is not plowed, the collection truck may not collect your waste.



Sun	Mon	Tue	Wed	Thu	Fri	Sat
WEEK B	1	2 	3	4	5	6
WEEK A	7	8	9	10	11	12
14 WEEK B 	15 Nova Scotia Heritage Day Site Open Collection as usual	16	17	18	19	20
21 WEEK A	22	23	24	25	26	27
28 WEEK B	SEE PAGES 16 – 18 TO FIND OUT YOUR COLLECTION DAY				HAVE WASTE CURBSIDE FOR 7 A.M.	

WINTER WASTE COLLECTION DELAYS

During the winter months, slippery roads are a given. Slippery roads equal delays. When we have inclement weather, waste collection trucks may not show up at the time you are accustomed to. Play it safe and always have your waste out for **7 A.M.**



IMPORTANT PROGRAM CHANGES

COMPOSTABLE BAGS & COFFEE / PAPER CUP CONTAMINATION

Compostable (plastic-like) bags and hot/cold drink cups (Tim Hortons, McDonalds, Subway®, etc.) have a negative effect on the processing of organic material.

The compostable bags and cups get stuck in the grinding equipment at the Lunenburg Regional Community Recycling Centre (LRCRC), where our organics are processed. Additionally, when the bags and cups make their way into the curing (aging/maturing) stage, they do not break down, even a year after sitting in the compost pile. As a result, the LRCRC has asked the Municipality of Chester to support two things:

1. The use of paper-based (bags, boxboard, newspaper, etc.) liners in our green cart program or, alternatively, do not use any liners at all. Paper products are easily shredded in the grinding equipment and break down easily; and
2. Urge residents and businesses to place hot/cold drink cups into the garbage instead of the green cart.

The Municipality of Chester fully supports the LRCRC's request, and we are urging residents and businesses to **VOLUNTARILY** make these changes, effective immediately.

If you have any questions, please contact Kaizer Meadow at 902-275-2330 or email us at solidwaste@chester.ca.



INFORMATION REGARDING USED OIL AND ANTIFREEZE CONTAINERS

In September 2019, the Province of Nova Scotia introduced a new regulation for safe disposal and recycling of used oil and glycol (antifreeze) products. The Used Oil Management Association Atlantic (UOMA) are managing this program.

What does this mean? Residents can bring their used items to the Household Hazardous Waste Depot at Kaizer Meadow for recycling. UOMA Atlantic will then collect these used containers from Kaizer Meadow for proper recycling through their program. These items include:

- used oil containers (50 litres or less)
- used antifreeze containers (50 litres or less)
- oil filters
- diesel exhaust fluid containers (50 litres or less)
- lubricating aerosols
- automotive parts cleaner

On March 1, 2020, used oil and glycol products and containers were **BANNED** from disposal in landfills.

For more information about UOMA Atlantic, this program and alternative drop off sites for these materials, please visit their website at www.uoma-atlantic.com.



March 2021

www.chester.ca

HOW SPRING WEIGHT RESTRICTIONS AFFECT YOUR ROAD

Call Kaizer Meadow at 902-275-2330 or Public Works Services at 902-275-1312 to determine if waste collection on your road is affected by the spring weight restrictions imposed by the Department of Transportation & Infrastructure Renewal. Or, visit www.novascotia.ca/tran for road updates.

If your road is affected, a smaller truck is used for collection. Garbage bags, blue/clear bags, paper, corrugated cardboard AND green carts **CAN BE COLLECTED AS USUAL. GREEN CART MATERIAL NEEDS TO BE BAGGED.**



COLLECTION OF GREEN CARTS IN THE WINTER

Having issues with your cart freezing during the winter months? Be sure to place your cart out for collection every two weeks, even if it isn't full. Straining material and using **PAPER BAGS** will also help.



Sun	Mon	Tue	Wed	Thu	Fri	Sat
WEEK B	1	2	3	4	5	6
7 WEEK A	8	9	10	11	12	13
14 WEEK B 	15	16	17 	18	19	20
21 WEEK A	22	23	24	25	26	27
28 WEEK B	29	30	31	SEE PAGES 16 – 18 FOR YOUR COLLECTION DAY		



WASTE COLLECTION IN THE WINTER

In case of a snowstorm, listen to CKBW or call Kaizer Meadow at 902-275-2330 in the event that waste collection has been cancelled.

If cancelled, collection will be held the Saturday immediately following your regular collection. Be sure to remove materials from the roadside as soon as possible to avoid the snow plow.



THE MUNICIPALITY OF CHESTER'S FOUR STREAM SORTING GUIDE

RECYCLABLES (BLUE BAG)	RECYCLABLE PAPER (CLEAR BAG)	ORGANICS (GREEN CART)	GARBAGE (CLEAR BAG)
<ul style="list-style-type: none"> • Plastic containers, tubs, lids & bottles (shampoo, yogurt, detergent, cookie trays, cleaning fluid bottles, etc.) • Plastic bags (grocery, bread, shopping, frozen food, Ziploc® bags, etc.) • Aluminum foil, cans, pie plates & trays • Tin & steel cans • Metal lids & tops (place in can & crimp shut) • Glass bottles & jars (baby food, pickle, Mason jars, pasta, etc.) • Milk containers • Paper cartons (juice, sauerkraut, etc.) • Refundable beverage containers (pop cans, bottles, juice packs, liquor bottles, etc.) 	<ul style="list-style-type: none"> • Newspaper & flyers • Magazines • Catalogues & phone books • Soft covered books • Hard covered books (remove cover & place in same bag) • Junk mail • Office paper • Envelopes (plastic windows do not have to be removed) • Egg cartons & paper trays • Writing paper • Note pad & copier paper • Shredded paper • Boxboard (paper towel & toilet paper rolls, cereal & detergent boxes, frozen food boxes, Kleenex & shoe boxes) • File folders • Greeting cards 	<ul style="list-style-type: none"> • All food waste (peelings, bones, dairy, seafood shells, etc.) • Coffee grounds, filters & tea bags • Pizza boxes • Paper towels & napkins • Wet or soiled paper or boxboard • Waxed paper/cardboard • Paper dishes • Sugar, flour & potato bags (paper) • Wooden stir sticks • Tissue paper • Leaves & grass • Sawdust & wood shavings (douse with water before collection to avoid a blowing hazard) • Twigs & branches, small brush 	<ul style="list-style-type: none"> • ALL Styrofoam™ • Candy wrappers & chip bags • Cigarette butts • Clothing & foot wear • Disposable diapers • Feminine products • Kitty litter & dog waste • Vacuum bags & floor sweepings • Toothpaste tubes • Frozen juice cans • Dryer sheets & lint • Popcorn bags • Soiled/dirty plastic wrap • Soiled/dirty aluminum foil • Incandescent light bulbs • Broken glass (place in box and label "BROKEN GLASS") • Kleenex® • Paper drink cups (see pg. 8 for details)
<p>Beverage containers (excluding milk cartons) can also be returned to an ENVIRO-DEPOT™ for a refund.</p> <div style="border: 1px solid blue; padding: 5px; margin: 5px 0;"> <p>RECYCLABLES MUST BE CLEAN OR THEY WILL BE REJECTED!</p> </div> <div style="border: 1px solid blue; padding: 5px;"> <p>RECYCLABLE CONTAINERS & RECYCLABLE PAPER DO NOT BELONG IN THE SAME BAG.</p> </div>	<p>Corrugated cardboard (flatten boxes & tie in 2' x 2' x 3' bundles & place next to other bags of recyclable paper).</p> 	<p>DO NOT place branches more than 2" in diameter in the cart or that they stick out over the top of the green cart. The lid must be able to close.</p> <p>TIE branches in 3' long bundles and place them out beside your cart.</p> <p>If your cart is full, put a MAXIMUM of 3 paper bags of leaves out per collection.</p> <p>NO PLASTIC OR THE CART WILL BE REJECTED!</p>	<div style="border: 2px solid red; padding: 10px;"> <p>HOUSEHOLD HAZARDOUS WASTE must be taken directly to Kaizer Meadow in a labeled container that WILL NOT leak. See page 28 or more details on hazardous waste.</p>  </div>

April 2021

Questions? Call 902-275-2330

INFORMATION ON FLUORESCENT BULBS & CFL DROP-OFF BOXES

Drop off your old fluorescent bulbs (including compact fluorescent lights) at one of our drop-off boxes, and the Municipality will dispose of them at our Household Hazardous Waste Depot.

Drop-off box locations:

- Hubbards Hardware
- New Ross Home Hardware
- Adam's Bottle Exchange

****PLEASE NOTE: Chester Home Hardware will no longer accept any fluorescent bulbs.**

Please remember that incandescent bulbs, flood lights and LED lights are **NOT** hazardous and belong in the garbage. You can place them in a box next to your garbage and label **"GLASS"**.



Sun	Mon	Tue	Wed	Thu	Fri	Sat
WEEK B		SEE PAGES 16 –18 FOR YOUR COLLECTION DAY		1	2  GOOD FRIDAY NO COLLECTION SITE CLOSED	3  ALTERNATE COLLECTION
4 WEEK A Easter Sunday	5 Easter Monday Collection as usual	6	7	8	9	10
WEEK B		11	12	13	14	15
WEEK A		18	19	20	21	22
WEEK B		25	26	27	28	29
						30 HAVE WASTE CURBSIDE BY 7 A.M.

INFORMATION ABOUT AEROSOL CANS

Empty aerosol cans are recyclable, however, they cannot be placed in the blue bag for curbside collection as it poses a safety issue for the waste collection vehicles. Please take your empty cans to either Kaizer Meadow or Adam's Bottle Exchange in Gold River.



BULKY ITEM COLLECTION

Businesses and residents can place **ONE** bulky item alongside regular waste on collection day. Below is an outline of what is acceptable and not acceptable as a bulky item. If you are still unsure, please call Kaizer Meadow at 902-275-2330. Remember: **WHEN IN DOUBT, FIND OUT!**

What classifies as a bulky item? A bulky item can be a chair, a sofa, a mattress, a washer, or a wooden pallet. It can also be **ONE** extra clear bag of garbage.

ACCEPTABLE ITEMS

- **ONE** large appliance - stoves, dishwashers, hot water tanks, etc.
- Metals - small car parts, lawn mowers (fluids **MUST** be removed), etc.
- **ONE** piece of furniture or mattress.
- Lobster traps - **LIMIT** of **ONE** trap per residence; any more than this will not be collected.
- **ONE BUNDLE** of wood - wood cannot exceed 4 feet in length & 50 lbs in weight; small pieces must be bundled, boxed or bagged.
- **ONE BUNDLE** of drywall - drywall cannot exceed 4 feet in length & 50 lbs in weight; small pieces must be bundled, boxed or bagged.
- **ONE BUNDLE** of asphalt shingles - asphalt shingles cannot exceed 50 lbs in weight; small pieces must be bundled, boxed or bagged.

NON-ACCEPTABLE ITEMS

- Electronics - see page 20 for a detailed list. These items will **NOT** be collected.
- Tires - take to Kaizer Meadow. Retailers can also take up to 4 tires at a time, free of charge.
- HHW - paints, oils, fuels, pesticides, etc. must be taken to Kaizer Meadow's HHW Depot. See page 28 for a detailed list.
- Propane tanks - can be taken to Kaizer Meadow.
- Items containing Freon® - refrigerators, freezers, dehumidifiers & air conditioners must be taken to Kaizer Meadow.
- Bags larger than 31" x 42" will not be collected.
- **MULTIPLE BLACK BAGS** will not be collected (only one black bag will be collected per civic address).

IF IN DOUBT, FIND OUT!

Not sure if you can put that old refrigerator or that old chair out for bulky item collection? Call Kaizer Meadow at 902-275-2330 to find out.

More Guidelines...

- **DO NOT** place anything that you wish to keep near the curb or near your waste collection box on collection day. The waste collector may mistake the item as a bulky item.
- **IF YOU CAN'T SEE IT, NEITHER CAN THE COLLECTOR.** Do not bury blue bags or recyclable paper beneath or behind your bulky item. The driver will not rummage through to look for these items. Please keep them separate and visible, or they may be missed.
- **IMPORTANT:** If you choose to have an extra bag of garbage instead of a larger item, this is acceptable. Just be sure you only have **ONE** black bag at the curb. Over the limit black bags will still be **REJECTED**.

May 2021

www.chester.ca

GOING...GOING...GONE

Sometimes, mistakes happen. And sometimes, these mistakes can cost someone a valuable item. Unfortunately, these mistakes can happen during waste collection. Sometimes, items that aren't actually meant to be collected curbside get picked up with other waste, especially with our bulky item program. Items that are placed near or with garbage, recyclables and paper will normally be collected and tossed onto the collection truck.

The solution? **DO NOT** place anything that you wish to keep near the curb or near your waste collection box on collection day. The collector may mistake the item as a bulky item.



VICTORIA DAY

Kaizer Meadow is open for business on May 24 and collection will take place as usual.



Sun	Mon	Tue	Wed	Thu	Fri	Sat
WEEK B						1
SEE PAGES 16 –18 FOR YOUR COLLECTION DAY						
2	3	4	5	6	7	8
WEEK A						
9	10	11	12	13	14	15
WEEK B Mother's Day						
16	17	18	19	20	21	22
WEEK A						
23	24	25	26	27	28	29
WEEK B 30	Victoria Day 31					
WEEK A						

NEED COMPOST?

Kaizer Meadow has a limited supply of compost that is usually ready to harvest in late spring. Please call 902-275-2330 or email solidwaste@chester.ca for availability.



THERE'S AN APP FOR THAT!



R6RECYCLES

Need a reminder as to when waste collection day is?
Have questions about sorting?

A custom web app for waste collection is available for residents to download to their smartphone or tablet called **R6RECYCLES**.

Download the R6RECYCLES app and never miss another collection day!

- ⇒ Create a personalized collection calendar
- ⇒ Find out 'What Goes Where'
- ⇒ Receive notifications by email, text or phone
- ⇒ Receive real time alerts on weather related service disruptions
- ⇒ Play our 'What Goes Where' sorting game



No smart phone or tablet?

No problem! This information can be found online at www.chester.ca/r6recycles.



PLASTIC BAG BAN



As of October 30, 2020, a provincial plastic bag ban was implemented affecting grocery stores, restaurants, convenience stores, department stores, etc.

What does this ban mean? It means these businesses are no longer permitted to offer plastic bags at their checkouts. They can however, offer paper or reusable bags to their customers.

The Plastic Bag Ban is intended to reduce waste by cutting back the amount of plastic used by consumers. Did you know that it is estimated that the average Nova Scotian uses approximately 450 shopping bags per year?!

With this ban, there are exemptions. Plastic bags are permitted for:

- Packaging loose bulk items such as fruit, vegetables, nuts, grains or candy
- Packaging loose small hardware items such as nuts, bolts and nails
- Containing or wrapping frozen foods, meat, poultry or fish, whether pre-packaged or not
- Wrapping flowers or potted plants
- Protecting prepared foods or bakery goods that are not pre-packaged



For a full list of exemptions and more information on this provincial ban, please visit <https://novascotia.ca/single-use-plastic-bag-ban/>.

June 2021

Questions? Call 902-275-2330

COTTAGE WASTE

Just like at home, cottage waste **MUST** be properly sorted. Clear bags must also be used for garbage (1 black bag is allowed).

Most times, cottage roads do not have access to curbside collection. Most will have a waste collection area at the beginning of their road. This area is meant for the residents of that road only. If someone dumps waste at these areas and is not permitted to, that waste is considered illegally dumped and is in contravention of our Solid Waste By-Law (see

page 26 for more details). If you have any questions about cottage waste, please call 902-275-2330.



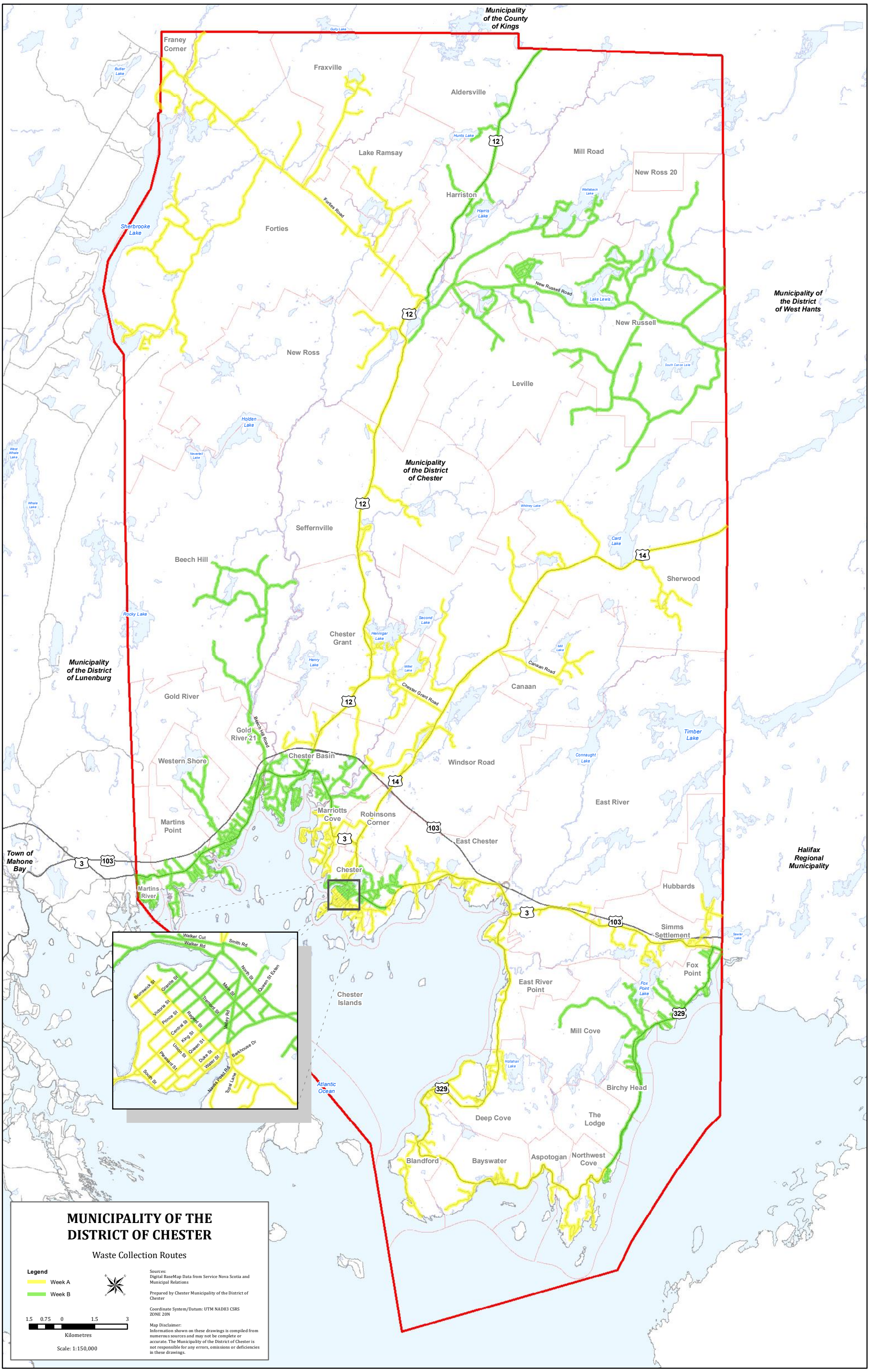
Photo by T. Harnish

Sun	Mon	Tue	Wed	Thu	Fri	Sat
WEEK A		1	2	3	4	5
6	7	8	9	10	11	12
WEEK B						
13	14	15	16	17	18	19
WEEK A						
20	21	22	23	24	25	26
WEEK B						
Father's Day						
27	28	29	30			
WEEK A						

ABUSE AT PUBLIC WASTE STATIONS

Public waste stations are in place throughout the Municipality to deter people from littering. All too often, we will find household waste dumped at these stations. When dumping at a waste station takes place, it is classified as illegally dumped and is in contravention of our Solid Waste By-Law. Please remember that household waste, etc. **SHOULD NOT** be dumped next to a public waste station.





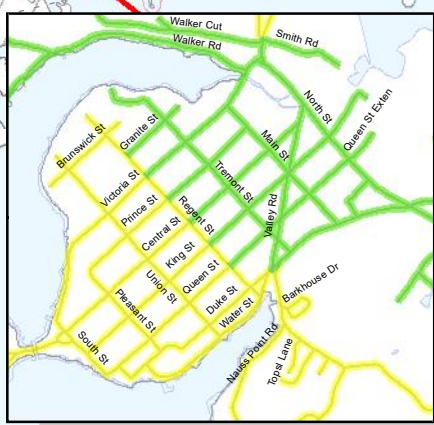
Municipality of the County of Kings

Municipality of the District of West Hants

Municipality of the District of Chester

Municipality of the District of Lunenburg

Halifax Regional Municipality



MUNICIPALITY OF THE DISTRICT OF CHESTER

Waste Collection Routes

Legend
— Week A
— Week B



Sources: Digital BaseMap Data from Service Nova Scotia and Municipal Relations
 Prepared by Chester Municipality of the District of Chester

Coordinate System/Datum: UTM NAD83 CSRS ZONE 20N

Map Disclaimer: Information shown on these drawings is compiled from numerous sources and may not be complete or accurate. The Municipality of the District of Chester is not responsible for any errors, omissions or deficiencies in these drawings.



Scale: 1:150,000

WEEKDAY	WEEK A	WEEK B
Monday	Starting at the intersection of Hwy. 3 and Hwy. 329 at East River, including part of Northwest Cove, Aspotogan, Bayswater, Blandford, Upper Blandford, Deep Cove and part of East River , and ending at 2400 Hwy. 329 and including Tilley Point Road.	Starting at the abandoned rail line where it intersects with Hwy. 3 in Hubbards and ending at and including Leeward Point Rd Hwy 329. This includes part of Northwest Cove, The Lodge, Birchy Head, Mill Cove, Fox Point and part of Hubbards to the abandoned rail line where it intersects with Hwy. 3 in Hubbards including Fox Point Front Rd.
Tuesday	<p>Starting at the intersection of Pig Loop Rd. and Valley Rd. turning South onto Duke St. to the intersection of Duke St. and Regent St. including Regent St. and all streets in the Village of Chester lying South of Regent St. including the Peninsula.</p> <p>Starting at the intersection of Haddon Hill Rd. and Hwy. 3 including all of Haddon Hill Rd., all of Robinsons Corner (including Robinsons Corner Rd.) and including part of Marriotts Cove to and including Marriotts Cove Rd East and Marriotts Cove Rd West. Also, including Hwy. 3 to Douglas Avenue.</p> <p>Starting at Pig Loop Rd. and ending at the intersection of Duke St. and Pig Loop Rd. including all of Pig Loop Rd., Zinck Rd., Golf Course Rd., Chandler Rd., and Nauss Point.</p> <p>Starting at the East Chester Recreation Association building on Hwy. 3 and ending at Chester Shore Rd., including Stevens Rd.</p>	<p>This also includes all streets in the Village of Chester lying North of Regent St. including Walker Rd. and Walker Cut.</p> <p>From Chester Shore Rd. to the Old Train Station, excluding Chester Shore Rd.</p> <p>Starting at the East Chester Recreation Association building traveling along Old Trunk 3 to the intersection of Hwy. 3 and Haddon Hill Rd. (next to the Old Train Station). This includes all of Old Trunk 3, Chester Downs, Islandview Subdivision, all of Stanford Lake Rd. (to where it intersects with Hwy. 3), Chester Commons Rd., Maplewood Dr., and Target Hill Rd.</p>
Wednesday	<p>Starting at the intersection of Route 14 and Hwy. 3 to the Landfill including Chester Grant Rd. to Route 12, Wake Up Hill Rd. and all of Route 14.</p> <p>Starting at the intersection at Marriotts Cove Rd. and Hwy 3 ending at Marina Rd., including Marina Rd., Shaw Island, and part of Marriotts Cove.</p>	Starting at Marina Rd. and ending at the old Gold River School (6200 Hwy 3), including part of Marriotts Cove, Middle River, Chester Basin, Croft Rd., Beech Hill Rd., Bridgeview Drive, Gold River Rd. and all other roads along Hwy 3. Also including part of Route 12 where it intersects with Hwy 3 to Hwy 103 (Exit 9 carpool).
Thursday	Starting at Hwy 103 (Exit 9 carpool) along Route 12, including Lacey Mines Rd., Clinton Rd., North Lower Grant Rd., to New Ross where Route 12 intersects with the Forties Rd., including all of the Forties and over to the county line at Franey Corner, including Seffernsville, Forties, Lake Ramsay, Glengarry and Fraxville to the intersection of Route 12 and Forties Rd.	<p>Starting at the county line at New Russell over to the junction of Lake Lawson Road, including Lake Lawson Road and also including Mill Rd. and Leville.</p> <p>Starting at the county line in Aldersville to the intersection of Route 12 and Forties Rd.</p>
Friday	Starting at East Chester Recreation Association building and ending at the abandoned rail line in Hubbards and all roads in between. This includes Simms Settlement, Dauphinee Mill Lake Rd. & Otter Point.	Beginning at the bridge in Martins River and ending at the old Gold River School (6200 Hwy 3) in Gold River. This includes all roads in Martins Point, Western Shore and part of Gold River between the old Gold River School (6200 Hwy 3) and Martins River Bridge.

July 2021

www.chester.ca

IMPORTANT INFORMATION REGARDING CANADA DAY WASTE COLLECTION

This year, if your collection day falls on **CANADA DAY** (July 1), please place your waste out for collection on **SATURDAY, JULY 3**.

PLEASE CHECK THE CALENDAR AND LOOK FOR THE ICONS TO SEE WHEN YOUR COLLECTION DAY WILL BE.



GET THE CORRECT INFORMATION

So many times we hear the phrase, "Somebody told me..." or "I heard that...". Sometimes, that "somebody" is wrong. To get the correct information on waste and recycling, please call Kaizer Meadow at 902-275-2330 or email "Dear Shabby" at solidwaste@chester.ca. Shabby and staff will gladly give you the **CORRECT** information!



Sun	Mon	Tue	Wed	Thu	Fri	Sat
WEEK A	HAVE WASTE CURBSIDE FOR 7 A.M.			1 CANADA DAY NO COLLECTION SITE CLOSED	2	3 ALTERNATE COLLECTION
4 WEEK B	5	6	7	8	9	10
11 WEEK A	12	13	14	15	16	17
18 WEEK B	19	20	21	22	23	24
25 WEEK A	26	27	28	29	30	31 ALTERNATE COLLECTION FOR CIVIC HOLIDAY

DELIVERING WASTE TO KAIZER MEADOW

When delivering waste to Kaizer Meadow, it is important to remember to secure **ALL** loads. Unsecured loads of waste not only can cause an unsightly mess, it can also create a huge safety hazard.



ENVIRO-DEPOT™ - ADAM'S BOTTLE EXCHANGE

Adam's Bottle Exchange is located at 5960 Highway #3 in Gold River. This is what they can do for you...

- Accept electronics.** Adam's Bottle Exchange is a drop-off for all acceptable electronic waste.
- Accept refundable beverage containers.** You get a 5¢ refund for all non-liquor beverage containers less than 5L; you also receive 5¢ for liquor beverage containers 500ml or less and 10¢ for liquor beverage containers greater than 500ml. Please remove all caps, rinse containers and do no crush. Containers include:
 - Aluminum beverage containers & steel beverage cans
 - Glass beverage bottles & liquor bottles
 - Paper juice cartons & tetra-paks
 - Plastic beverage containers

For details on these programs, contact Adam's Bottle Exchange Ltd. at 902-212-0989.

NO DAIRY OR MEAL REPLACEMENT CONTAINERS (place in bag with other recyclables).

3. **Accept paint.** Below is a list of paint products you can and cannot bring. Containers must be tightly sealed and clearly labeled with their contents. Please do not return paint in glass containers or mix alkyd (oil-based) and latex (water-based) paints.

ACCEPTABLE PAINTS	NON-ACCEPTABLE PAINTS
Interior/external latex, alkyd, enamel & oil-based paints	Paints containing pesticides or wood preservatives that are registered under Pest Control Act (ie. Marine anti-fouling paint)
Porch, floor & deck paint	Craft paint (aerosols acceptable)
Interior & exterior varnishes & urethanes	Automotive paint (aerosols acceptable)
Marine enamels	Industrial or two-part paint
Wood finishing oils, stain & shellac	Roof patch
Latex driveway sealers	Brushes, rags & rollers
Rust paint, decorative metal paints	Paint in glass containers



ELECTRONICS RECYCLING



The Electronic Product Recycling Association (EPRA) allows for the recycling of the following electronics. Please call 1-877-462-8907 or visit www.recyclemyelectronics.ca/ns for more information.

Please note that as of January 1, 2020, new items have been added to the list.

- Televisions (TVs)
 - Computers (including laptops, notebooks)
 - Computer scanners
 - Computer monitors
 - Computer CPUs
 - Cables, mice, keyboards & other components
 - Telephones (cordless & corded)
 - Fax machines
 - Answering machines
 - Radios & clock radios
 - VCRs
 - DVD players
 - Stereos & amplifiers
 - Speakers
 - CD players
 - MP3 players
 - Digital cameras
 - Video cameras & camcorders
 - Car stereo systems
 - Home theaters in a box
- NEW!**
- Microwave ovens
 - E-readers
 - GPS units
 - Video Game Systems & controllers
 - External hard drives, optical drives & modems



The electronics listed on this page **WILL NOT** be collected at the curb, even as a bulky item.

The EPRA Drop-off in the Municipality of Chester is located at **ADAM'S BOTTLE EXCHANGE**, #5962 Highway #3, Gold River.



Cell phones can be recycled through the Recycle My Cell program. For locations or information about the program, visit www.recyclemycell.ca or call 1-888-797-1740.

August 2021

Questions? Call 902-275-2330

IMPORTANT INFORMATION REGARDING THE CIVIC HOLIDAY WASTE COLLECTION

This year, if your collection day falls on the **CIVIC HOLIDAY** (Aug. 2), please place your waste out for collection on **SATURDAY, JULY 31.**

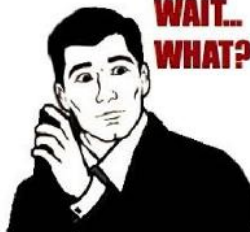
PLEASE CHECK THE CALENDAR AND LOOK FOR THE ICONS TO SEE WHEN YOUR COLLECTION DAY WILL BE.



FAQs

WHEN CAN I PUT MY WASTE OUT?

Waste can be placed at the curb for collection **NOT EARLIER** than dusk of the day **PRIOR** to collection, as outlined in the Waste Collection & Disposal By-Law. The owner of the property is responsible for the waste until it is collected.



Sun	Mon	Tue	Wed	Thu	Fri	Sat
1 WEEK B	2 CIVIC HOLIDAY NO COLLECTION SITE CLOSED	3	4	5	6	7
8 WEEK A	9	10	11	12	13	14
15 WEEK B	16	17	18	19	20	21
22 WEEK A	23	24	25	26	27	28
29 WEEK B	30	31	HAVE WASTE CURBSIDE FOR 7 A.M.			

HOW MANY GARBAGE BAGS AM I ALLOWED ON COLLECTION DAY?

On your collection day, you are allowed 6 bags of garbage (1 black bag, 5 clear), 10 bags of recyclables (includes bags of paper & bundles of cardboard) and 1 green cart (3 paper bags of yard waste is permitted as well). In addition, you are allowed to place out **ONE** bulky item (ie. chair, sofa, mattress, pallet, etc).



Hurricane season has started. Are you prepared for 72 hours?

www.chester.ca/72-hours

YOUR STAY-IN-PLACE CHECKLIST

SUPPLIES LIST

In anticipation of an emergency, have enough supplies to stay in your home for a minimum of three days. In the winter, access to a secondary heat source may be necessary as well.

- 6L of water per person (2L per day)
- Food that won't spoil and a manual can opener
- First aid supplies
- Enough medications, such as for an allergy or a prescription
- List of your prescription medications with prescription number and purpose along with your pharmacy information
- Pet care
- Wind-up or battery-powered flashlight
- Wind-up or battery-powered radio
- Batteries
- Money
- Contact phone numbers for friends/family

In the event of an evacuation, you may want to consider taking

- Important documents, such as your drivers licence, insurance papers, health card, birth certificate, etc.
- Car keys and house keys

Before the storm, did you

- Get enough fuel (propane for a BBQ or stove, gasoline for a generator or car, etc.)?
- Secure any loose items outside, like patio furniture or toys (trampolines especially)?
- Fill the bathtub with water?
- Charge all of your battery-operated devices?
- Check on your neighbour? Maybe you can make a plan together.

COMFORT CENTRES & RELIEF

Comfort centres may open to support local residents. These centres provide a place to get warm, recharge devices, check on each other, and share information. Comfort Centres operate voluntarily and services offered may vary. Check with your Councillor (contact info on back page), our website and social media channels, or the radio to see if the Comfort Centre in your area is open.

Are you a "critical customer?" Nova Scotia Power offers a Critical Customer Communication program for customers whose health depends on electricity, such as those requiring oxygen machines or dialysis. Register with NSP to be added to their communication list. You, especially, need to prepare ahead of a potential power outage. Ensure you have sufficient medical supplies, extra batteries and an alternate power source.

EMERGENCY CONTACTS

- Police/Fire/Ambulance911
- Non-emergency health advice811
- Provincial road concerns511
(report a washout or obstruction)
- Non-emergency support211
- NS Power Outage Line..... 1-877-428-6004
(report a downed line or power outage)
- Sewer concerns after hours.. 1-888-664-6998
(report a back-up or pump station issue)

INFORMATION SOURCES

- Check www.chester.ca for local updates.
- www.GetPrepared.ca
- www.weatheroffice.gc.ca
- @RegionalEMO or @chestermun (Twitter)
- ChesterMunicipality on Facebook
- CKBW (98.1) or HANK FM (100.7)
- Your Councillor (contact information is at chester.ca or at the back of any municipal newsletter) because they will know a) if the area's comfort centre is open, b) any dangers (road washouts, etc) in the area.

If a state of local emergency is declared and evacuation is necessary, someone will come to your door.

September 2021

www.chester.ca

IMPORTANT INFORMATION REGARDING LABOUR DAY WASTE COLLECTION

This year, if your collection day falls on **LABOUR DAY** (Sept. 6), please place your waste out for collection on **SATURDAY, SEPTEMBER 4.**

PLEASE CHECK THE CALENDAR AND LOOK FOR THE ICONS TO SEE WHEN YOUR COLLECTION DAY WILL BE.



DEAR SHABBY

Not sure if it's your collection day? Turn to **PAGE 16** to find out or email **SHABBY**.

Not sure what bag to put that one particular item in? Turn to **PAGE 10** or email **SHABBY**.

Not sure what the Canada Day holiday waste collection schedule will be? Turn to **PAGE 19** or email **SHABBY**.



IF IN DOUBT, FIND OUT! Emailing **DEAR SHABBY** at solidwaste@chester.ca will always get you the correct information!

Sun	Mon	Tue	Wed	Thu	Fri	Sat
WEEK B			1	2	3	4  ALTERNATE COLLECTION
5	6  LABOUR DAY NO COLLECTION SITE CLOSED	7	8	9	10	11
WEEK A						
12	13	14	15	16	17	18
WEEK B						
19	20	21	22	23	24	25
WEEK A						
26	27	28	29	30	SEE PAGES 16 – 18 FOR YOUR COLLECTION DAY	
WEEK B						

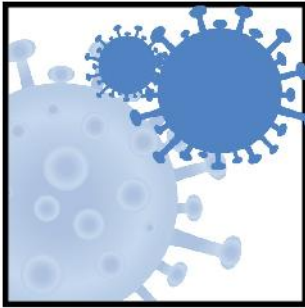
SAFE SHARPS BRING BACK PROGRAM



Sharps are needles, syringes and lancets. **NEVER** place sharps into the garbage, recycling bags or green cart. They can seriously injure and cause unnecessary stress to the staff who handle your waste.

Ask your pharmacist for a **FREE** Safe Sharps container for your used sharps. Return the full container to the pharmacy for **FREE** and **PROPER** disposal.





COVID-19 and Us

As the pandemic continues, the Municipality of Chester wants to keep you and our staff safe, assist you where we can, and maintain services. We adjust as pandemic conditions change and always follow Public Health Guidelines. If you are coming to see us, please do the same by adhering to the rules below. If our offices and facilities are required to close again, we are always available online or by telephone.

(Message written November 2020)

Coming to see us?



Stay home if you are sick or just arrived in Nova Scotia.



One person at a time, please.



Practice social distancing

6' or 2 m



Sanitize hands before and after visiting



Wear a mask upon entering, if possible!

October 2021

Questions? Call 902-275-2330

PROPANE TANKS

Propane tanks (any size) can create many safety hazards if they are not properly handled and disposed of. **NEVER** throw your mini tanks in the garbage or blue bag. They could explode when being compacted on the collection trucks or if they are compacted by the landfill compactor. To dispose of any propane tank, take them to Kaizer Meadow **OR** now, you can drop off **MINI TANKS ONLY** at the Chester Home Hardware store!



DEAR SHABBY?

Questions about all things waste-related? No problem! Email "Dear Shabby" at solidwaste@chester.ca to have **ALL** of your questions answered!



Sun	Mon	Tue	Wed	Thu	Fri	Sat
WEEK B					1	2
SEE PAGES 16 –18 FOR YOUR COLLECTION DAY						
3 WEEK A	4	5	6	7	8	9
10 WEEK B	11 Thanksgiving Site open Collection as usual	12	13	14	15	16
17 WEEK A	18	19	20	21	22	23
24 WEEK B 31 WEEK A	25	26	27	28	29	30

LANDFILL FIRES



Unfortunately, fires in the landfill are not uncommon. These situations pose huge safety issues and concerns, resulting in site closures which are very inconvenient to our residents and waste haulers.

Many factors can contribute to the cause of a fire. Some of the more common "fire starters" found in a landfill are household batteries, propane tanks, aerosol cans, hazardous waste and chemicals which cause reactions, flares and ammunition.

Please **DO NOT** throw these items in the garbage...dispose of them properly!



ILLEGAL DUMPING: IT'S EVERYBODY'S BUSINESS!

Did you know that there have been dozens and dozens of illegal dumps reported in our Municipality alone? Dumping creates an unsightly and dangerous mess! What are people dumping? Well, usually it is construction and demolition waste (shingles, wood, drywall, etc.), loose waste and rejected and unsorted waste. Also at many dump sites, hazardous waste is found which is harmful to not only the environment but it is also harmful to wildlife and to residents who may have a drinking well nearby.



Did you also know that dumping in commercial dumpsters, Municipal waste collection areas, and even in your neighbour's garbage box is also considered illegal dumping? The Municipality has many waste collection sites for roads that do not have access to curbside collection. These collection sites are meant **FOR THE RESIDENTS WHO LIVE ON THAT ROAD ONLY**. These sites are **NOT** meant for dumping rejected garbage, construction waste or hazardous waste. No matter where it is, **ILLEGAL DUMPING is ILLEGAL!**

The good news? Most of the offenders are identified!

If you see or know someone who is illegally dumping waste, please report it by calling Kaizer Meadow at 902-275-2330.

LET'S KEEP OUR ENVIRONMENT CLEAN!



November 2021

www.chester.ca

DON'T FORGET!
LEAF & YARD WASTE WILL BE COLLECTED THIS MONTH



LEAVES IN CLEAR, PLASTIC BAGS WILL BE COLLECTED FROM NOVEMBER 15 - 26 ON YOUR REGULAR SCHEDULED DAY.

Special leaf collection is the only time that **CLEAR, PLASTIC** bags can be used to bag leaves. It is also the only time that an **UNLIMITED** amount of bagged leaves will be collected.

During regular collection, yard waste (leaves, grass clippings, garden trimmings, etc.) can go in your green cart. If your green cart is full, you can put **UP TO THREE PAPER BAGS** alongside your green cart each collection. Paper bags are always the preferred option.

DO NOT put branches in a bag. Please tie them in 3' long bundles and place them in the green cart and **ONLY IF THEY DO NOT EXCEED 2" IN DIAMETER OR STICK OUT OF THE TOP OF THE CART.**



Sun	Mon	Tue	Wed	Thu	Fri	Sat	
WEEK A	1	2	3	4	5	6	
7 WEEK B 	8	9	10	11  REMEMBRANCE DAY NO COLLECTION SITE CLOSED	12	13  ALTERNATE COLLECTION	
14 WEEK A	15 	SPECIAL LEAF COLLECTION IS ON YOUR				19	20
21 WEEK B	22 	REGULAR DAY DURING THESE TWO WEEKS				26	27
28 WEEK A	29	30	HAVE WASTE CURBSIDE FOR 7 A.M.				

IMPORTANT INFORMATION REGARDING REMEMBRANCE DAY WASTE COLLECTION

This year, if your collection day falls on **REMEMBRANCE DAY** (Nov. 11), please place your waste out for collection on **SATURDAY, NOVEMBER 13.**

PLEASE CHECK THE CALENDAR AND LOOK FOR THE ICONS TO SEE WHEN YOUR COLLECTION DAY WILL BE.



HOUSEHOLD HAZARDOUS WASTE (HHW)

The Household Hazardous Waste Depot is located at Kaizer Meadow Environmental Management Centre. It is open to all residents of the Municipality of Chester during regular landfill hours (see page 32).

Many products we use are hazardous and should not be thrown in the garbage. Here are a few things to keep in mind;

- Ensure that the materials being delivered to the HHW site are in their original container or a labeled container so that they can be easily identified. The containers should be in good condition and not leak.
- **If in doubt, find out!** Not sure if your material is hazardous? Call Kaizer Meadow to find out.

ACCEPTABLE ITEMS

Paint
 Cleaners & Degreasers
 Fertilizers
 Bleaches
 Expandable foams (pressurized)
 Wood preservatives
 Fluorescent lights, including CFLs
 Solvents, varnishes, stains & thinners
 Used oils & transmission fluids
 Batteries
 Empty and full aerosol containers
 Fire extinguishers
 Herbicides & pesticides



UNACCEPTABLE ITEMS

Business, industrial & institution waste
 Bio-medical waste
 Excessive amounts of material
 PCBs, radioactives & explosives
 Asbestos
 Unidentified material
 Compressed gas cylinders (oxygen, helium, acetylene, etc.)
 Flares (take directly to local RCMP office)
 Ammunition (take directly to local RCMP office)



- ⇒ When dropping off waste oil or gas, please make sure that these items are in a container that you do not wish to keep.
- ⇒ Please keep rechargeable batteries separate from alkaline batteries.
- ⇒ Empty aerosol cans can no longer be placed in the blue bag for recycling. Empty or full, they are hazardous. Please drop them off with other items at the HHW Depot.
- ⇒ Empty paint cans ARE NOT hazardous, however, under new program regulations, they need to be dropped off at the HHW Depot.



PROGRAM CHANGES FOR PAINT CANS

In early 2018, a new Paint Program Stewardship Plan was approved for the NS Paint Stewardship Program. Under the new plan, the program will now accept empty program paint cans, including aerosol paint cans. With that said, we are asking residents to no longer place empty cans in the garbage; empty cans should now be taken directly to Kaizer Meadow or dropped off at Adam's Bottle Exchange in Gold River.



INFORMATION ON HOUSEHOLD BATTERIES

Please note that there are battery collection tubes available at the Municipal Office (151 King Street) in Chester. These tubes are for **REGULAR HOUSEHOLD BATTERIES ONLY**. Any other batteries can be taken directly to Kaizer Meadow for disposal.

There is also a box to drop off old cell phones. Questions? Call 902-275-2330.



December 2021

Questions? Call 902-275-2330

IMPORTANT INFORMATION REGARDING CHRISTMAS DAY & NEW YEAR'S DAY 2022 AT KAZER MEADOW

This year, Kaizer Meadow will be closed on **CHRISTMAS DAY** (Dec. 25)

In addition, Kaizer Meadow will be closed on **NEW YEAR'S DAY 2022**.

BROKEN CHRISTMAS BULBS?

No problem! **ALL** broken glass **NEEDS** to be placed in a sealed box and labeled **"BROKEN GLASS"**.

Place the box alongside your other waste on your collection day.



✂️ SORTING WASTE OVER THE HOLIDAYS

RECYCLABLES	PAPER	ORGANICS	GARBAGE
Plastic packaging	Regular wrapping paper	Waxed paper	Foiled wrapping paper
Clear plastic wrap	Gift bags	Tissue paper	Bows & ribbon
Tin cookie/candy containers	Christmas cards & envelopes	Christmas cookies & candy	Christmas lights

Sun	Mon	Tue	Wed	Thu	Fri	Sat
WEEK A	HAVE WASTE CURBSIDE FOR 7 A.M.		1	2	3	4
5	6	7	8	9	10	11
WEEK B						
12	13	14	15	16	17	18
WEEK A						
19	20	21	22	23	24	25
WEEK B						CHRISTMAS DAY SITE CLOSED
26	27	28	29	30	31	JANUARY 1, 2022
WEEK A						NEW YEAR'S DAY SITE CLOSED
BOXING DAY						



TAKING DOWN THE CHRISTMAS TREE?

No problem! Place it out on your next waste collection day and it will be collected as your bulky item!



The Municipality of Chester would like to wish everyone a very happy holiday season!



ALTERNATIVE DROP-OFF SITES

Sometimes, residents will have an item that cannot be placed in the garbage or recyclables bag, such as a mini propane tank or an aerosol can. What can they do with that one item? Well, those items can always be dropped off at Kaizer Meadow, but sometimes that just isn't convenient. So, in an effort to make it a little more convenient, alternative drop-off sites are available to residents. Here are some items that cannot be collected curbside and their alternative drop off:

	Kaizer Meadow	Adam's Bottle Exchange	Chester Home Hardware	Hubbards Hardware	New Ross Home Hardware	Municipal Office
Aerosol cans (empty or full)	✓	✓				
Used oil & gasoline	✓					
Computer components & other Electronic waste	✓	✓				
Fluorescent lights & CFLs	✓	✓		✓	✓	
Herbicides & pesticides	✓					
Old cell phones	✓					✓
Household batteries	✓	✓		✓	✓	✓
Mini propane tanks	✓		✓			
Half-full & empty paint cans	✓	✓				
Lead-acid batteries (automotive)	✓					

PLEASE NOTE: Chester Home Hardware will **NO LONGER** be accepting fluorescent lights & CFLs. Please take them to an alternate drop-off site.



R6RECYCLES

Questions about your waste collection schedule or what goes where?
Download the **R6RECYCLES** app!

Or, go to www.chester.ca/r6recycles and get all the information the app offers.



GARBAGE? RECYCLABLE? COMPOSTABLE?

Confused about a few items that may (or may not be) in our sorting guide? Below are a few items that we get the most questions about.

ASHES

COOLED ashes can go into the green cart. It takes at least 3 weeks to completely cool them. Also be sure to douse the ashes with water once in your cart to avoid any dust getting into the collector's eyes when dumping the cart.



LED (LIGHT-EMITTING DIODE) LIGHTS & INCANDESCENT LIGHTS



LED lights, the kind that are more energy efficient than regular (incandescent) bulbs, and incandescent bulbs are garbage. To avoid breakage, you can place them into a cardboard box, label "**GLASS**" and put next to your other materials.

FROZEN JUICE CANS

Frozen juice cans—the kind made with tin lids and bottoms and cardboard in the middle - are **GARBAGE**. They are made of mixed materials and cannot be recycled.



HOT & COLD PAPER DRINK CUPS



Operational changes have made us change our messaging regarding the paper cup. Going forward, we ask that you place **ALL** paper drink cups into the garbage. This includes paper cups from Tim Hortons, McDonalds, Subway®, etc. For details on why our message has changed, see **PAGE 8**.

KEURIG® CUPS (K-CUPS)

These can be tricky. Unless you want to separate the components (remove lid and empty grinds), these cups are garbage because it is made of mixed materials. If you want to reduce waste, remove the lid and place it in the garbage; the grinds can be placed in to your green cart and the plastic cup can be rinsed and recycled!



STYROFOAM™



All Styrofoam™, regardless whether it has a recycling symbol on it or not, is **NOT** recyclable in our Municipality and should be placed in a clear bag with other garbage. This includes all Styrofoam™ cups, trays, packaging and containers.

FRYER GREASE / OIL

Cooled fryer grease/oil can go into your green cart. To avoid the oil leaking onto the ground, line your cart with leaves, paper towels or newspapers to absorb the liquid.



KITTY LITTER & DOG WASTE



ALL pet waste and litter is garbage. If you use a grocery bag for cleaning up after Fido, just toss the bag into a clear or black bag. The contents do not have to be emptied into the bag.

DOG FOOD & CAT FOOD BAGS

MOST of these items are made up of two or more materials (mixed) and cannot be recycled. Doing a simple tear test will tell you if the bag contains a plastic liner or not. Just rip the bag to see if there is a plastic film or liner where the tear ends. If there is, this means that the bag contains mixed materials and it belongs in the garbage.



ICE CREAM CONTAINERS

Ice cream containers - the kind that are made of a waxy cardboard material - are **GARBAGE**. Like the paper cup, we need to place these in the garbage due to operational changes at the composting facility (**SEE PAGE 8**).



Kaizer Meadow

Environmental Management Centre

Municipality of the District of Chester

Solid Waste Services

450 Kaizer Meadow Road (Route 14, approx. 17 km north from Exit 8, Hwy. #103)

P O Box 369

Chester NS B0J 1J0

www.chester.ca

Phone 902-275-2330

Fax 902-275-1468

Email solidwaste@chester.ca

HOURS OF OPERATION:

Mon. to Sat. - 8:00 A.M. - 4:00 P.M.

Municipality of the District of Chester

Public Works Services

151 King Street

P O Box 369

Chester NS B0J 1J0

www.chester.ca

Phone 902-275-1312

Fax 902-275-3630

Email publicworks@chester.ca

HOURS OF OPERATION:

Mon. to Fri. - 8:30 A.M. - 4:30 P.M.

This calendar was sponsored by:

Municipality of the District of Chester



THE MUNICIPALITY OF
CHESTER