

CASTLE ROCK

The Municipality of Chester's Newest Gem



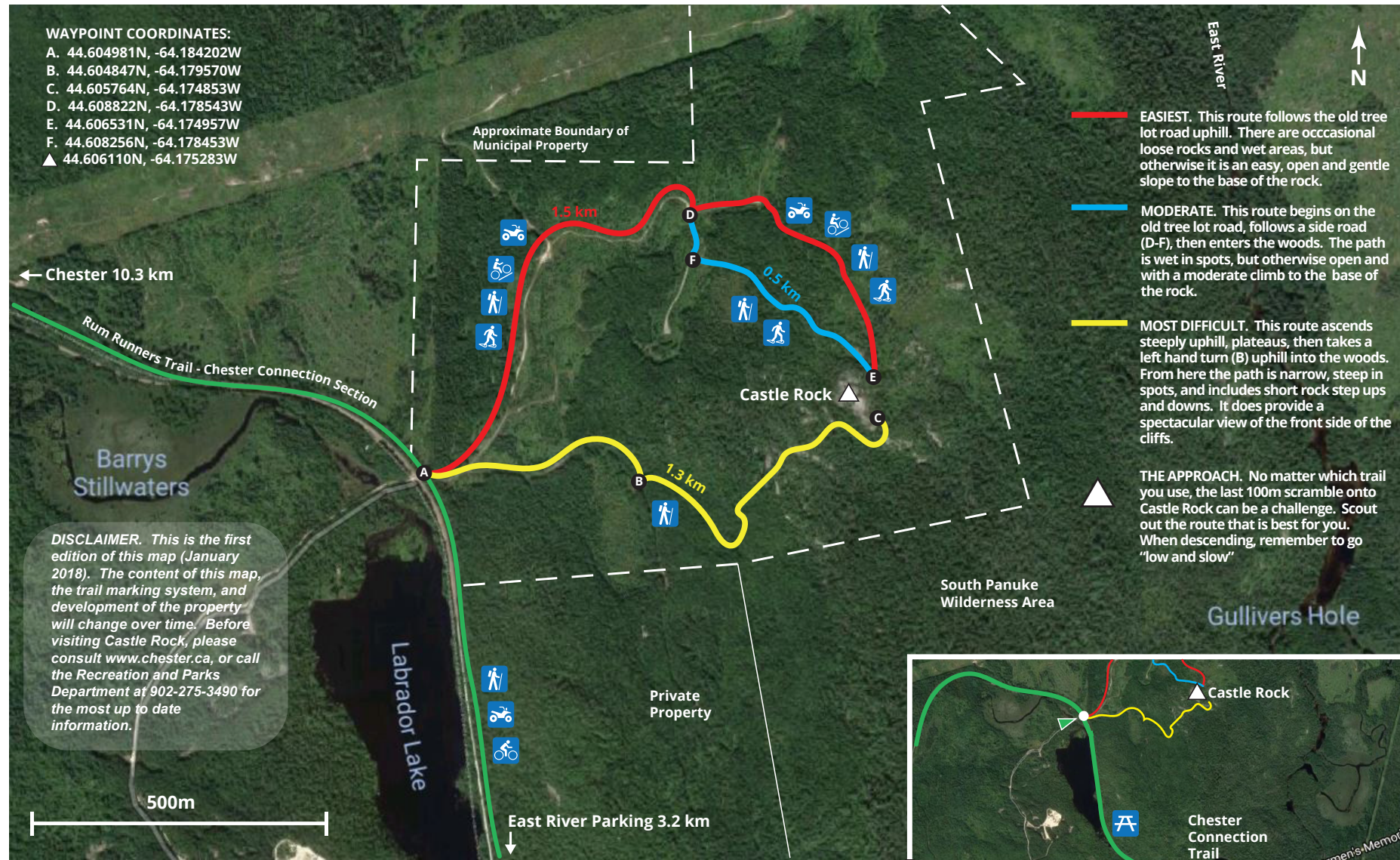
Photo: Linda Attaway

Hike, bike, and ATV to the heights of East River with panoramic views across all of Mahone Bay



For more information contact the Municipality of Chester's Recreation and Parks Department.
902-275-3490
recreation@chester.ca

THE MUNICIPALITY OF CHESTER



- Trail Kiosk
- Bicycle trail
- Parking
- Mountain Bike appropriate
- Picnic area
- Snowshoeing
- Hiking
- All-terrain vehicle

Follow these blaze marks to help you find your way to Castle Rock

!Caution: These trails pass through areas of exposed landscape including steep rock faces, and slippery surfaces. Always tell someone where you are going and your expected return time. Dress for the conditions of the day and expect wind exposure and colder temperatures on the peak.

Approximate round trip distance from the parking lot = 9 km.
Allow 3 - 4 hours.

It is wise to carry a whistle and compass with you. An 'escape bearing' of 252 degrees will direct you from the Rock back toward the Chester Connection trail.

Ticks are prevalent in the spring/summer and can be found throughout most of the year. These trails experience high use. Please stay on marked trails and follow 'Leave No Trace' principles when dealing with waste. "Pack it in, and pack it out."

Please report any issues to the Recreation & Parks Department at 902-275-3490

